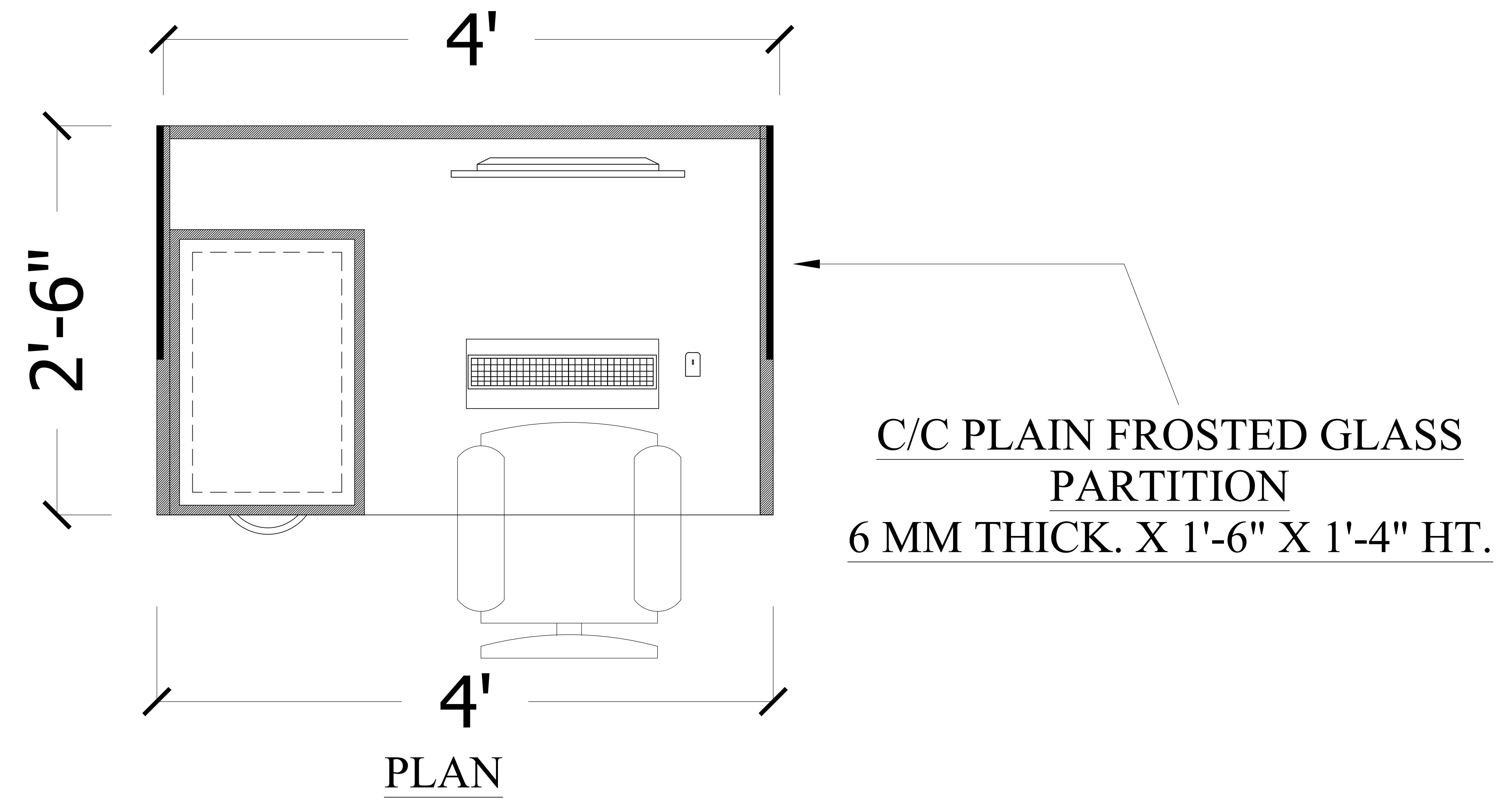
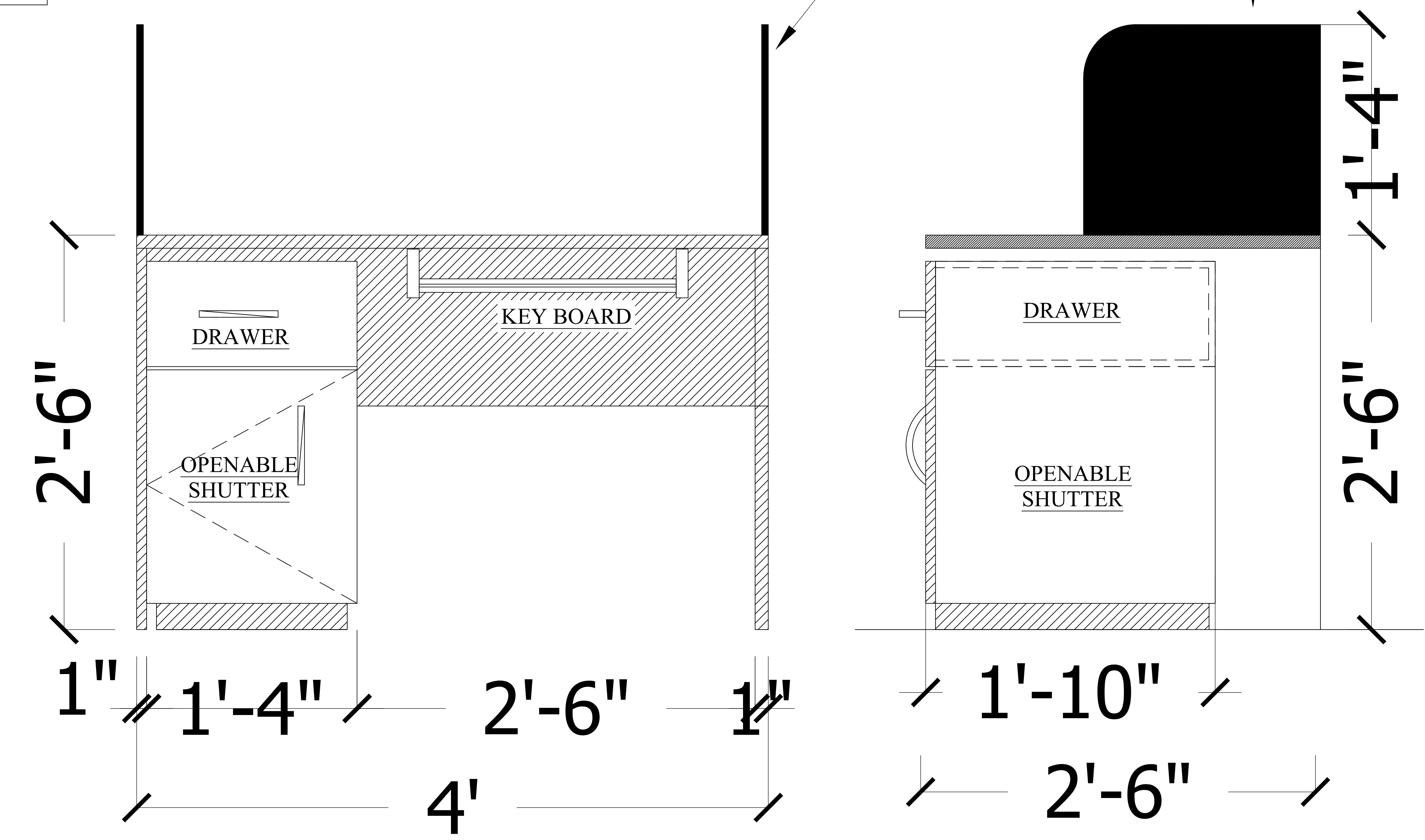


WORK STATION 4'-0" X 2'-6" X 2'-6"HT.
MADE IN 18MM THICK. COMMERCIAL
PLY WITH PASTING 1MM THICK.
LAMINATED INCLUDING PEDESTAL
WITH 1 DRAWER & 1 SHUTTER



TOTAL
WORK STATION- 25 NOS

6MM THICK. 18" X 16" HT.
PLAIN FROSTED GLASS
PARTITION



FRONT ELEVATION

SIDE ELEVATION